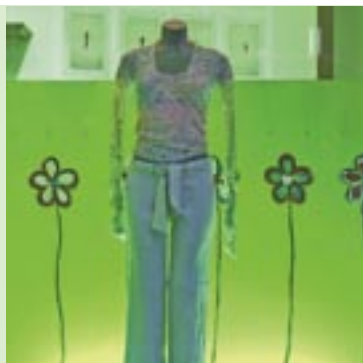
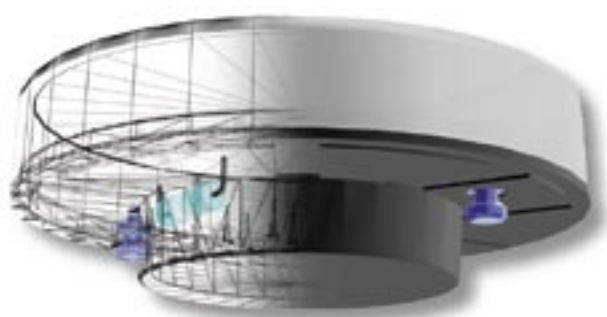


Micro-LynxTM

SYLVANIA



SLI

Micro-Lynx™ LED



The revolutionary Micro-Lynx LED lamp from Sylvania.

A brand new extension to the successful Micro-Lynx range, Micro-Lynx LED, as the name states incorporates 21 state of the art LED's (Light Emitting Diodes).

Micro-Lynx LED operates directly on mains supply so no separate transformer is required.

Available in two different finishes (clear or satin) in warmwhite or 4 different colours (blue, green, red or yellow).

With Micro-Lynx LED, the creation of staggering or subtle ambience lighting effects will become child's play. No difficult choices of which transformer or interconnection cables to use - with the new Micro-Lynx LED it's just plug and play!



Micro-Lynx™ F



Introducing Micro-Lynx F second generation.

Micro-Lynx F a well established lamp that has been specified and used in many exciting applications has been improved.

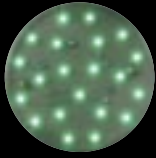
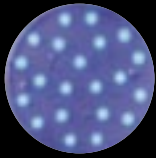
The second generation of Micro-Lynx F sees a reduction in it's power rating from 7W to 6W, whilst retaining the same lumen package, and a new "twist and lock" lampholder feature is now included for added safety.

visit us at www.sylvania-lamps.com



Applications

- Furniture lighting
- Ambient Lighting
- Pathway and stairway lighting
- Display lighting
- Outdoor recessed accent lighting

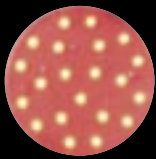


Integrated electronic transformer

Micro-Lynx LED has a built in transformer, saving space and installation time.

Power consumption

Micro-Lynx LED has a power consumption of 1.5 Watt for all the available colours.

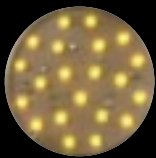


Longer life

With an average rated lifetime of 50.000 hours the Micro-Lynx LED will virtually last a lifetime!

Lampholder

Micro-Lynx LED is suitable for use with the GX53 "Twist and lock" lampholder. This newly designed "Twist and lock" feature makes the Micro-Lynx LED a direct retrofit for existing fixtures.



Temperature range

Micro-Lynx LED can be used for a temperature range from -25°C up to 60°C.



Applications

- Furniture lighting (The perfect alternative to using halogen)
- Ambient Lighting
- Pathway and stairway lighting
- Display lighting
- Outdoor recessed accent lighting



Integrated electronic transformer

Micro-Lynx F has a built in High-Frequency electronic ballast, saving space and installation time.

temperature range from -20°C up to 40°C.

Power consumption

Micro-Lynx F has a power consumption of 6 Watt for all the available colours.

Longer life

With an average rated lifetime of 6.000 hours the Micro-Lynx F has a lifetime compared to 6 times that of an incandescent lamp.

Colours

Available in colours; Homelight Deluxe 827, Warmwhite Deluxe 830, Coolwhite Deluxe 840, Red, Green and Blue.

Temperature range

Micro-Lynx F can be used for a



Micro-Lynx™ LED



Palmyra



Naos



All fixtures shown on this page are Lumiance and Sylvania fixtures suitable for use with Micro-Lynx LED or Micro-Lynx F lamps.

SYLVANIA:

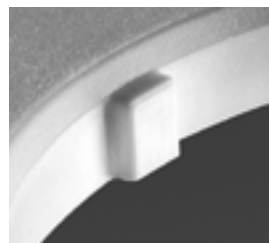
- Palmyra
- Naos



Micro-Lynx LED



ø 75,2 mm, height 24,5 mm

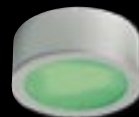


All LED and F versions incorporate the new twist and lock safety feature



Micro-Lynx F

Micro-Lynx™ Fixtures



Microsaver



Silo square



Silo round

LUMIANCE:

- Microsaver
- Silo round
- Silo square

Micro-Lynx™ F

Micro-Lynx™ LED



Ordering Code	Description	Wave-length	Colour Temp.	Light Output	Wattage	Packing Quantity
0025060	Micro-Lynx LED White Satin	-	5800°K	15 lm	1.5W	10
0025061	Micro-Lynx LED Red Satin	633 nm	-	12 lm	1.5W	10
0025062	Micro-Lynx LED Green Satin	525 nm	-	15 lm	1.5W	10
0025063	Micro-Lynx LED Blue Satin	469 nm	-	3 lm	1.5W	10
0025064	Micro-Lynx LED Yellow Satin	587 nm	-	14 lm	1.5W	10
0025065	Micro-Lynx LED White Clear	-	5800°K	25 lm	1.5W	10
0025066	Micro-Lynx LED Red Clear	633 nm	-	20 lm	1.5W	10
0025067	Micro-Lynx LED Green Clear	525 nm	-	25 lm	1.5W	10
0025068	Micro-Lynx LED Blue Clear	469 nm	-	4 lm	1.5W	10
0025069	Micro-Lynx LED Yellow Clear	587 nm	-	25 lm	1.5W	10

Micro-Lynx™ F



Ordering Code	Description	Colour Temp.	Light Output	Wattage	Packing Quantity
0025214	Micro-Lynx F 6W/827	2700°K	220 lm	6W	20
0025218	Micro-Lynx F 6W/830	3000°K	220 lm	6W	20
0025219	Micro-Lynx F 6W/840	4000°K	220 lm	6W	20
0025244	Micro-Lynx F Red	Red	170 lm	6W	20
0025245	Micro-Lynx F Green	Green	310 lm	6W	20
0025246	Micro-Lynx F Blue	Blue	110 lm	6W	20

SLI Sylvania Lighting International

International Product Marketing Lamps

Noorderlaan 105c

2030 Antwerp

Belgium

www.sylvania-lamps.com

T +32 (0)3 610 44 80

F +32 (0)3 610 44 58

E microlynx@sylvania-lighting.com

