

Техническое описание продукта HE 28 W/865

LUMILUX T5 HE | Трубчатые люминесцентные лампы T5 High Efficiency, цоколь G5



- Public buildings Offices Shops Supermarkets and department stores Industry Outdoor applications only in suitable luminaires

- Good economy and efficiency Up to 20 % more economical than LUMILUX T8 Up to 50 % smaller volume than comparable T8 lamps



Техническое описание продукта

Technical data

Электрические параметры

| | |
|-----------------------------|----------|
| ZLDV_Nominal current [AGGR] | 0.17 A A |
|-----------------------------|----------|

Фотометрические данные

| | |
|---------------------------------------|-----------------------|
| ZLDV_Luminous flux at 35 °C [AGGR] | 2700 lm |
| ZLDV_Light color (designation) [AGGR] | LUMILUX Cool Daylight |
| ZLDV_Rated LLMF at 2,000 h [AGGR] | 0.95 |
| ZLDV_Rated LLMF at 4,000 h [AGGR] | 0.93 |
| ZLDV_Rated LLMF at 6,000 h [AGGR] | 0.92 |
| ZLDV_Rated LLMF at 8,000 h [AGGR] | 0.9 |
| ZLDV_Rated LLMF at 12,000 h [AGGR] | 0.9 |
| ZLDV_Rated LLMF at 16,000 h [AGGR] | 0.9 |
| ZLDV_Rated LLMF at 20,000 h [AGGR] | 0.89 |
| ZLDV_Luminous flux [AGGR] | 2700 lm |

Размеры и вес



| | |
|---|------------|
| ZLDV_Tube diameter [AGGR] | 16 mm |
| ZLDV_Length with base excl. base pins/connection [AGGR] | 1149 mm |
| ZLDV_Product weight [AGGR] | 88.02 g |
| ZLDV_Overall length [AGGR] | 1163.20 mm |

Срок службы

| | |
|--------------------------|---------|
| ZLDV_Service life [AGGR] | 19000 h |
|--------------------------|---------|

Дополнительные данные

| | |
|-----------------------------|--------|
| ZLDV_Mercury content [AGGR] | 1.5 mg |
|-----------------------------|--------|

Техническое описание продукта

| | |
|----------------------------|--|
| ZLDV_Product remark [AGGR] | Suitable for ECG operation only Lamp designed for internal luminaire temperatures of 30...40 °C; optimum luminous flux achieved at 35 °C |
| Утилизация по WEEE | Да |
| Последующая модель EAN | 4050300591346 |
| Последующая модель EAN | 4050300464640 |

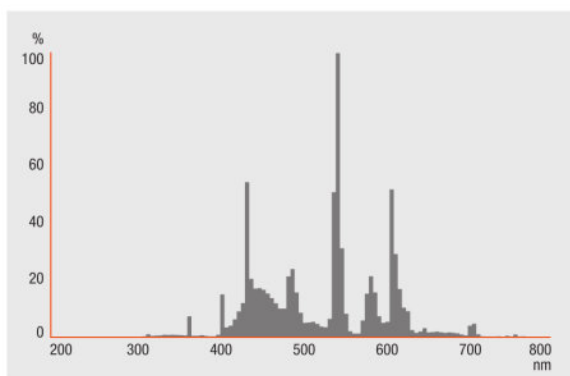
Сертификаты и Стандарты

| | |
|-------------------------------------|-----------------|
| ZLDV_Energy efficiency class [AGGR] | F |
| ZLDV_Energy consumption [AGGR] | 29.00 kWh/1000h |

Environmental information

| Information according Art. 33 of EU Regulation (EC) 1907/2006 (REACH) | |
|---|---------------|
| Date of Declaration | 18-04-2022 |
| Primary Article Identifier | 4050300591346 |
| Declaration No. in SCIP database | In work |

Распределение силы света

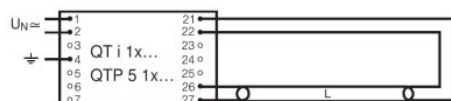


FL_865

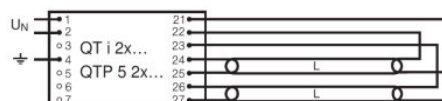
Техническое описание продукта

Системная гарантия

Расширенная системная гарантия OSRAM в сочетании с ЭПРА OSRAM



QUICKTRONIC INTELLIGENT QT i 1x QTP 5 1x



QUICKTRONIC INTELLIGENT QT i 2x QTP 5 2x

Ecodesign regulation information:

Separate control gear and light sources must be disposed of at certified disposal companies in accordance with Directive 2012/19/EU (WEEE) in the EU and with Waste Electrical and Electronic Equipment (WEEE) Regulations 2013 in the UK. For this purpose, collection points for recycling centres and take-back systems (CRSO) are available from retailers or private disposal companies, which accept separate control gear and light sources free of charge. In this way, raw materials are conserved and materials are recycled.

Данные для заказа

| Product code | Описание продукта | Упаковка (цена/шт.) | Размеры (длина x ширина x высота) | Объем | Вес брутто |
|---------------|-------------------|---------------------------------------|-----------------------------------|-----------------------|------------|
| 4050300591346 | HE 28 W/865 | Shipping carton box 20 шт. Sleeves | 1182 mm x 83 mm x 104 mm | 10.20 дм ³ | 2712.50 g |

The mentioned product code describes the smallest quantity unit which can be ordered. One shipping unit can contain one or more single products. When placing an order, for the quantity please enter single or multiples of a shipping unit.

Ссылки

Более подробную информацию по системной гарантии и положениям и условиям гарантийного обслуживания см. на странице <https://>

▶ www.inventronics-light.com/multilevel-guarantees

Техническое описание продукта

Примечание

Subject to change without notice. Errors and omission excepted. Always make sure to use the most recent release.

OSRAM is distribution partner
of LEDVANCE of LAMPS

OSRAM

OSRAM GmbH
Marcel-Breuer-Strasse 6
80807 Munich, Germany

HE 28 W/865

LUMILUX T5 HE | Трубчатые люминесцентные лампы T5 High Efficiency, цоколь G5

| Название продукта | Название продукта ЭПРА | EAN-код | Номинальный ток | Потери мощности | Световой поток при 35 °C | Число горелок |
|-------------------|------------------------|---------------|-----------------|-----------------|--------------------------|---------------|
| HE 28 W/865 | QT-FIT 5 1x14-35 | 4008321971234 | 0.14 A | 31.00 Вт | 2600 лм | 1 |
| | QT-FIT 5 2x14-35 | 4008321971258 | 0.26 A | 63.00 Вт | 2600 лм | 2 |
| | QTi 1x14/24/21/39 GII | 4008321383334 | 0.15 A | 33.00 Вт | 2700 лм | 1 |
| | QTi 1x28/54/35/49 GII | 4008321383358 | 0.15 A | 32.00 Вт | 2600 лм | 1 |
| | QTi 1x35/49/80 GII | 4008321383372 | 0.15 A | 33.00 Вт | 2700 лм | 1 |
| | QTi 2x14/24/21/39 GII | 4008321383396 | 0.29 A | 63.00 Вт | 2650 лм | 2 |
| | QTi 2x28/54/35/49 GII | 4008321383419 | 0.28 A | 61.00 Вт | 2600 лм | 2 |
| | QTi 2x35/49/80 GII | 4008321658951 | 0.30 A | 63.00 Вт | 2650 лм | 2 |
| | QTP5 1x14-35 | 4008321329035 | 0.14 A | 31.00 Вт | 2600 лм | 1 |
| | QTP5 2x14-35 | 4008321329073 | 0.26 A | 60.00 Вт | 2600 лм | 2 |